

PART OF N.E. 1/4, SEC. 30, T.7N., R.1W., S.L.B. & M.
MOUNTAIN MEADOW ESTATES SUBDIVISION PLAT 1

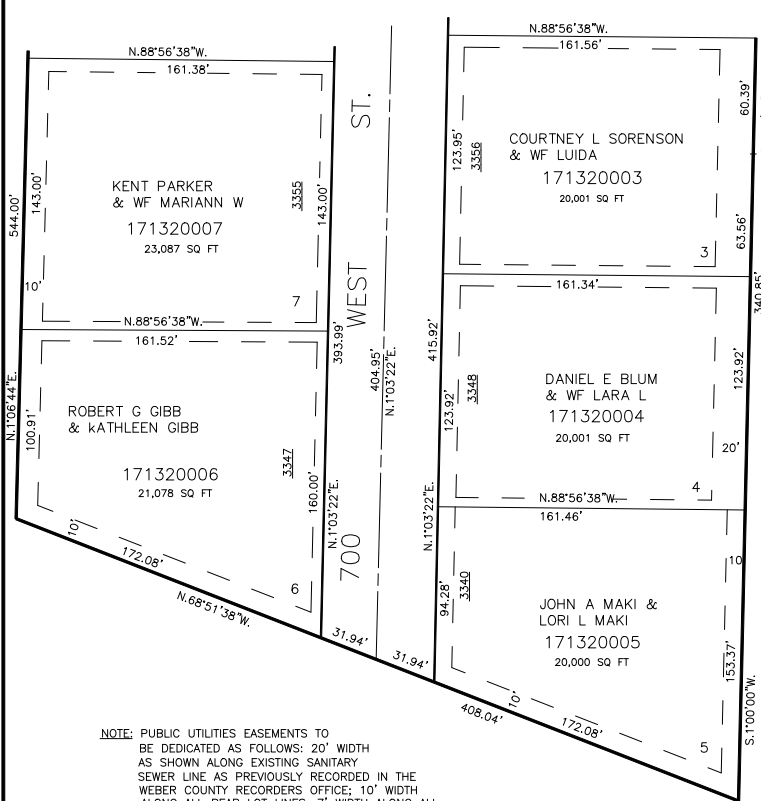
LOTS 1-10

PLEASANT VEIW CITY

SCALE: 1" = 50'

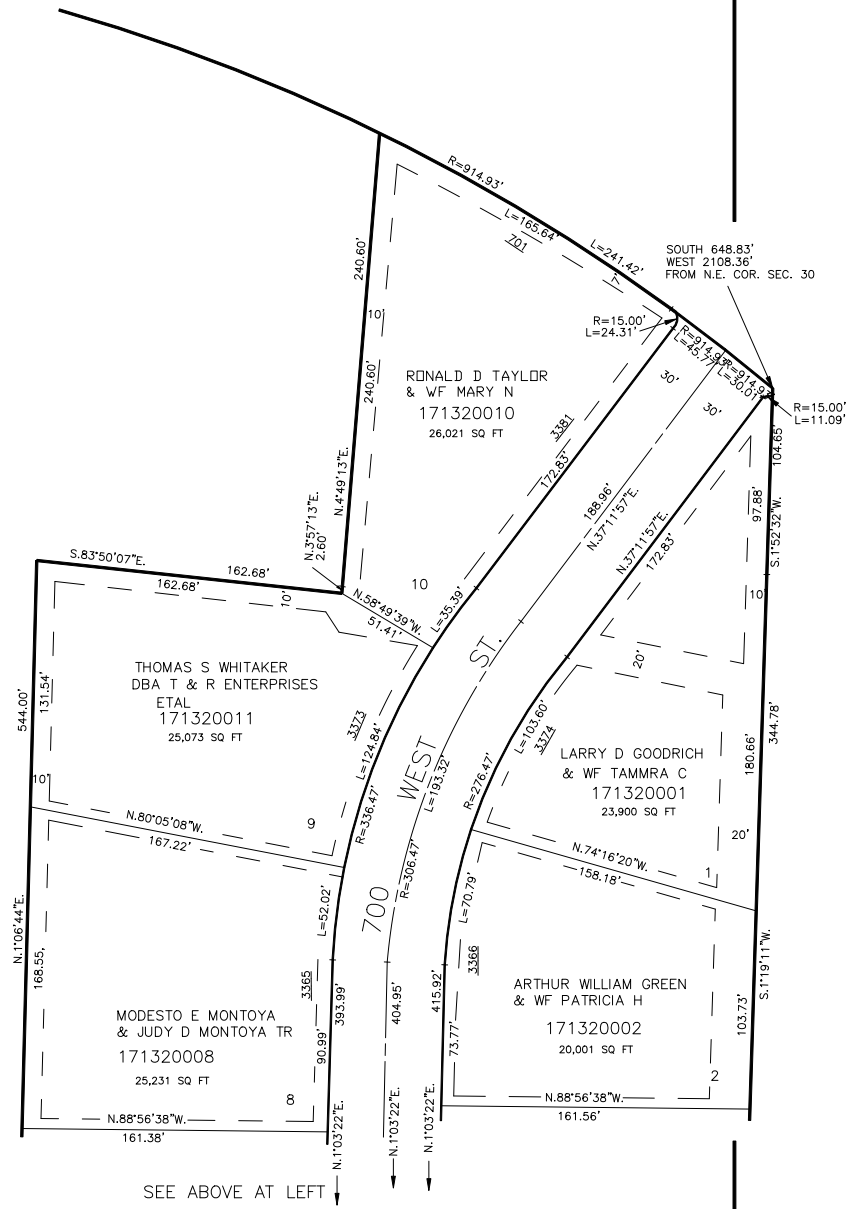
TAXING UNIT: 11

SEE BELOW AT RIGHT



NOTE: PUBLIC UTILITIES EASEMENTS TO BE DEDICATED AS FOLLOWS: 20' WIDTH AS SHOWN ALONG EXISTING SANITARY SEWER LINE AS PREVIOUSLY RECORDED IN THE WEBER COUNTY RECORDERS OFFICE; 10' WIDTH ALONG ALL REAR LOT LINES; 7' WIDTH ALONG ALL FRONT LOT LINES; AND 5' WIDTH ALONG EACH SIDE OF ALL SIDE LOT LINES. ALSO OTHERS AS INDICATED BY DASHED LINES.

NOTE: FOR COMPLETE ENG. DATA SEE ORIG. DED. PLAT IN BOOK 21, PAGE 54.



SEE ABOVE AT LEFT